

Global Sensors PDF-Logger Temperature Monitor User Manual



Global Sensors, LLC
63 McAdenville Road
Belmont, NC 28012
704-827-4331
www.global-sensors.com

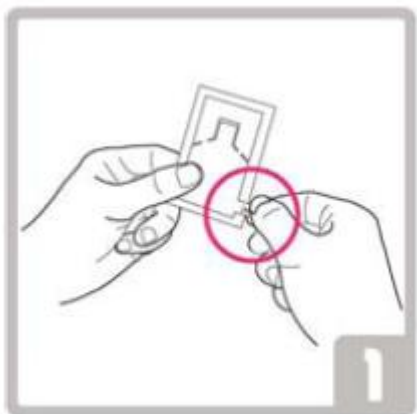
Table of Contents

Operating Instructions 2
 Using the PDF-Logger Temperature Label 2
LED Indicators 3
 Limit Indications 4
 LED Specific Responses 4
Reading the PDF File 5

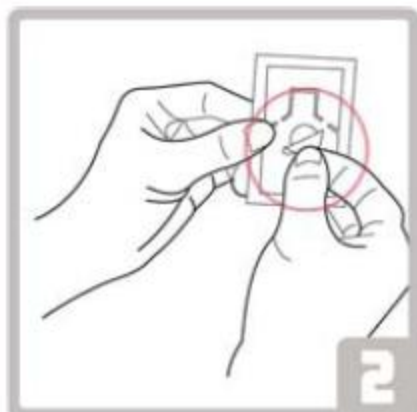
Operating Instructions

Using the PDF-Logger Temperature Label

PDF-Logger Temperature Label is a pre-programmed temperature Logger, so you don't need to configure it before using.



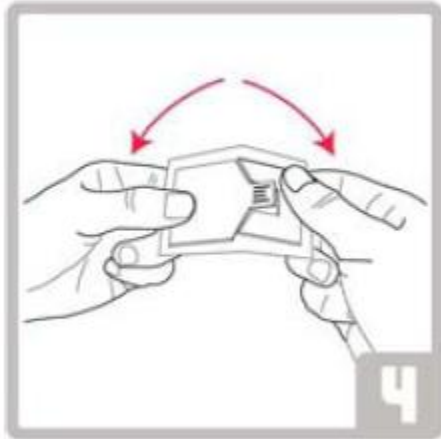
1. Tear START-STRIP to activate PDF-Logger.



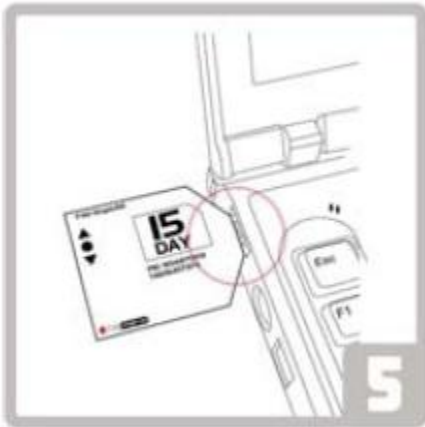
2. Peel plastic off of adhesive patch on back of label.



3. Adhere PDF-Logger to the paper marked "Temperature Monitoring", then place paper into protective sleeve.

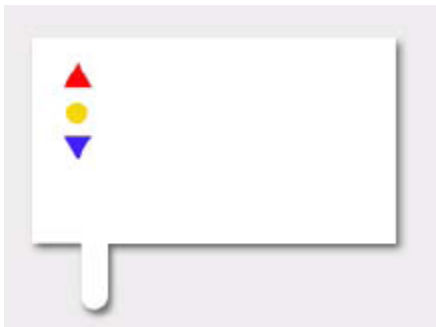


4. Snap PDF-Logger right hand section to stop recording; the USB plug appears after this step.



5. Connect PDF-Logger to USB port on PC.

LED Indicators



Indicators are visible on the left side of the PDF-Logger. There are three LED's: (1) Red (top), (2) Yellow (middle) and (3) Blue (bottom)

All LEDs flash in turn for five times When PDF-Logger is started

If the LEDs don't flash after the START-STRIP is pulled, then the unit is defective. Use another label and return the "non-flashing" -PDF-Logger for credit.

All LEDs light when PDF-Logger is initially connected to a PC computer.

Limit Indications



Over XX°C ---- Upper Temperature Limit
30min ----- Time Limit



Under XX°C ---- Lower Temperature Limit
30min ----- Time Limit

LED Specific Responses



Working Normally - No Alarms
Yellow LED flashes every 10 seconds



Under Lower Limit/Not Over Time
Blue and Yellow LEDs flash every 10 seconds



Over Upper Limit/Not Over Time
Red and Yellow LEDs flash every 10 seconds



Under Lower Limit/Over Time
Blue LED flashes Every 10 seconds



Over Upper Limit/Over Time
Red LED flashes every 10 seconds



Reading the PDF File

A stopped PDF-Logger is exactly the same as a USB flash drive. The contents of the drive is a PDF secure file that has a graphic representation of the Logger time vs. temperature data.

Some operating systems in Microsoft Windows may initially require that the computer be rebooted with the PDF-Logger "plugged into" a USB port for the correct hardware configuration step to occur.

The PDF file can be copied from the drive and moved to another location or emailed as an attachment to interested parties.

The PDF file is tamperproof and encrypted.